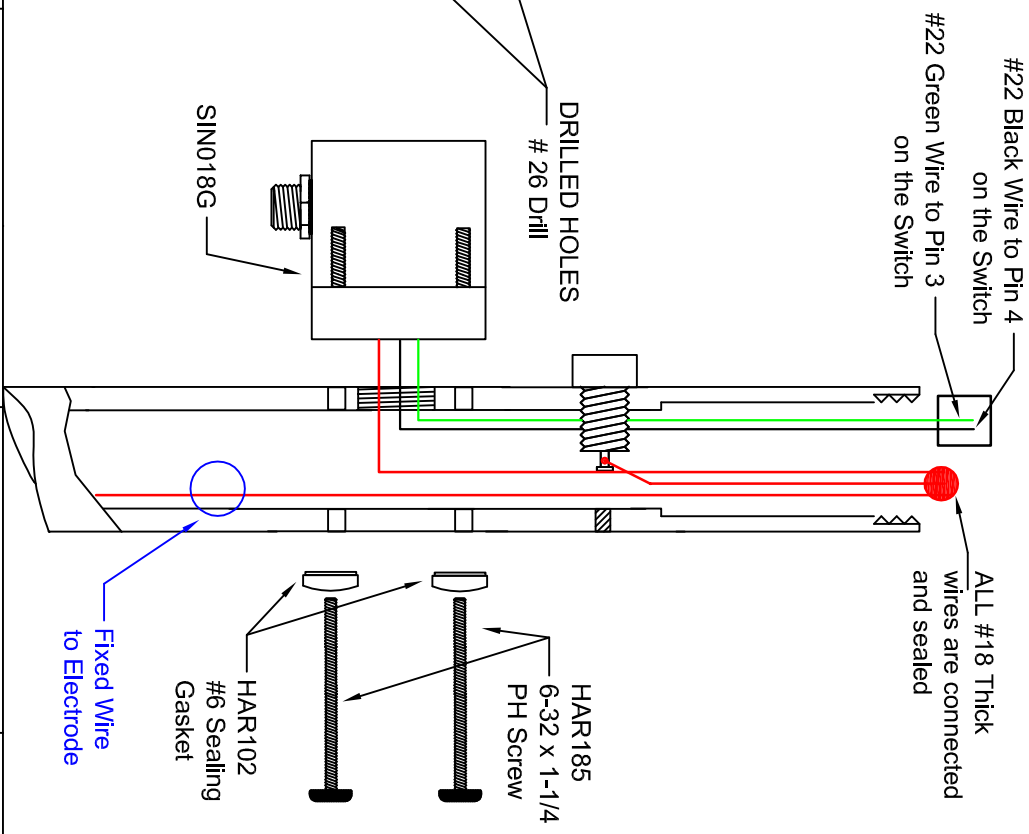
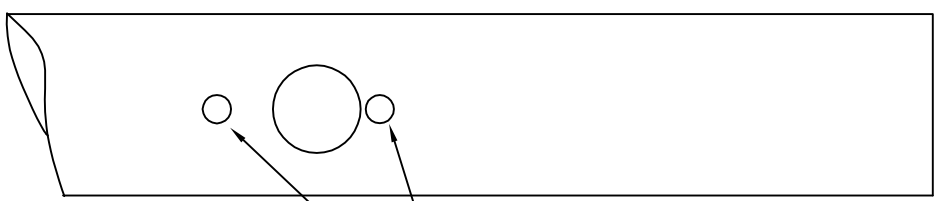
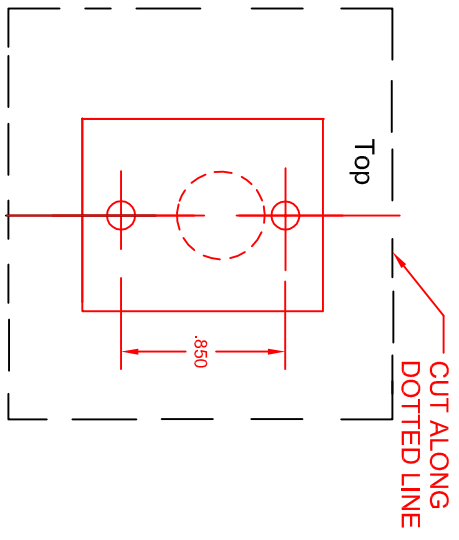


- 1) Cut out template on dotted line
- 2) Tape template over hole on cane
- 3) With a sharp awl, punch marks into cane ready for drilling
- 4) Use # 26 drill. Make sure that that the 2 holes will be drilled directly in center of aluminum tube.
- 5) **Use caution. DO NOT drill wires**
Keep wires to one side when drilling the hole.
- 6) Wire to switch and insulate well by wrapping teflon tape around switch or you may splice wires then cover with shrinkable tubing.
- 7) Install 6-32x1-1/8" screws Qua. 2 do not overtighten as not to strip the threads in the adapter block.



BY	DESCRIPTION	DATE	REV
REVISIONS			
Material:		Title:	
.X = +/- .030		Drill Template	
.XX = +/- .015		Data Probe Adapter Block	
.XXX = +/- .005		M.C. Miller Co. Inc. 11640 US Hwy #1 Sebastian, FL 32958 772-794-9448 al@mcmiller.com	
DRN:	A. J. Hilberts	Part #	REV.
Up Dated:	May 20, 2010	SIN018G	
SCALE	Full	DATE	June 1, 2009
SHEET		of	